

Product Information

JUNG

DCM Softphone TK-SP1



ALBRECHT JUNG GMBH & CO. KG

Volmestraße 1
58579 Schalksmühle

phone +49.2355.806-0
fax +49.2355.806-189

E-Mail: mail.vka@jung.de
Internet: www.jung.de/en

Contents

Intended use	2
Application.....	2
Brief description.....	2
System requirements.....	2
Installation.....	2
Settings.....	3
Acceptance of guarantee	4

Intended use

Application

- For VoIP- and Video Door communication
- For switching function on the JUNG DCM bus
- For use in combination with video streamer and SIP-Gateway. The use of a SIP-Server is recommended.

Brief description

- The SIP-Software DCM Softphone comes with a hardware-dongle only.
- This dongle is mandatory for using the full version!
- Without dongle the demo version is active. All functions of the full version are available for 30 days!

System requirements

- 1 USB-port (1.1 or higher)
- 100 MB free space on hard disk
- Graphic card with SVGA-resolution (min. 800 x 600 pixels) 16bit colours
- Operating system Windows XP SP2, Windows Vista SP2 (32/64-Bit) or Windows 7 (32/64-Bit)
- Microsoft .NET Framework 3.5 SP1 or higher

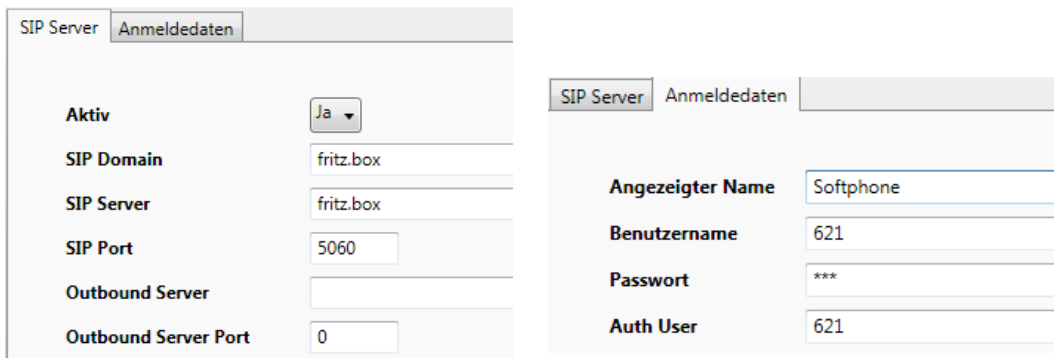
Installation

- The software can be downloaded from our webpage www.jung.de/en/.
- The software comes as a zip-file.
- Unzip this file and start the .exe-file.
- Please follow the installation routine.

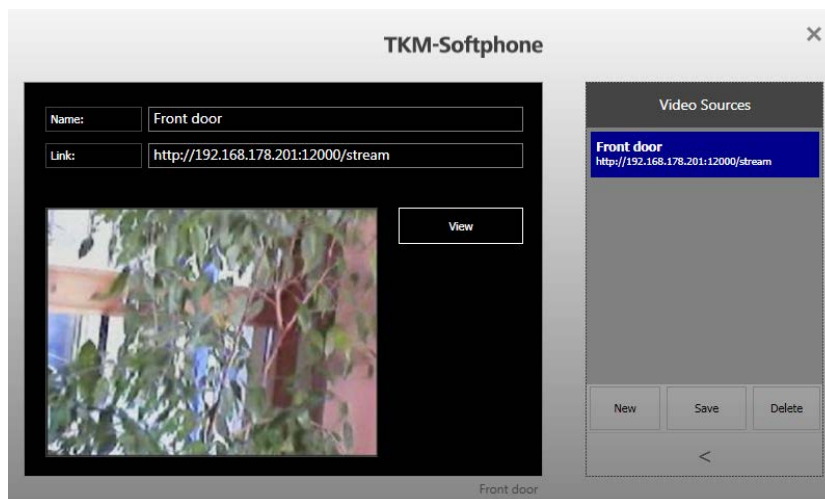
Settings

To get full functionality SIP-Gateway, Video streamer and SIP-Server have to be configured.

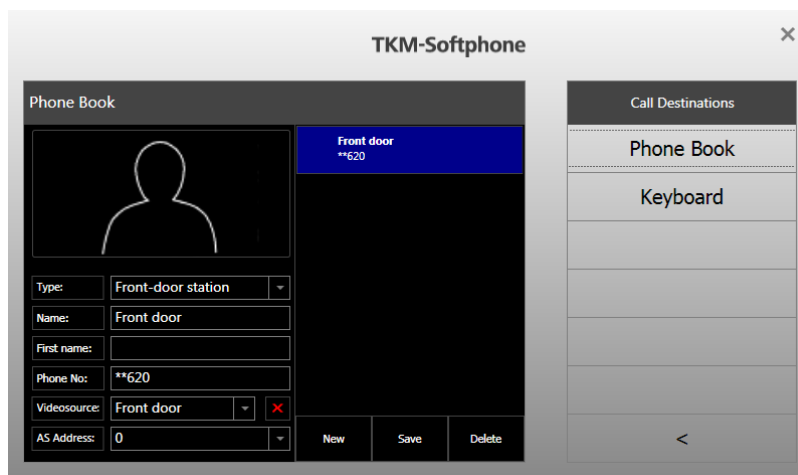
In the SIP settings (settings -> SIP settings) of the device the parameters have to be configured according to the settings and the login data of the SIP-server.



The video sources need to get a designation and an IP address.



In the phone book the incoming call can be connected to the video source and its designation. Then the designation of the video source will be shown.



Acceptance of guarantee

We accept the guarantee in accordance with the corresponding legal provisions.
Please return the unit postage paid to our central service department giving a brief description of the fault:

ALBRECHT JUNG GMBH & CO. KG

Service-Centre

Kupferstr. 17-19
44532 Lünen

Germany

Service-Line: 0 23 55 . 80 65 51
Fax: 0 23 55 . 80 61 89
E-Mail: mail.vka@jung.de


Technique (DCM)

Service-Line: 0 23 55 . 80 65 52
Fax: 0 23 55 . 80 62 55
E-Mail: mail.vka@jung.de

JUNG

Albrecht Jung GmbH & Co. KG
Volmestraße 1
58579 Schalksmühle

www.jung.de/en

 The CE-sign is a free trade sign addressed exclusively to the authorities and does not include any warranty of any properties.

Technical subjects to change
EN_PI_TK-SP1_1v1.doc
07/2013
0024073000